



Apple Cultivars  
for Puget Sound



# *the Urban Scion Post*

a publication of the Seattle Tree Fruit Society,  
a chapter of the Western Cascade Fruit Society

# President's Letter

Thanks to everyone who participated in our first zoom meeting on January 23<sup>rd</sup>. We had enough participants to establish a membership quorum. Therefore, we were able to elect our slate of officers for 2021:

President – Mike Ewanciw  
Vice President – Tracey Bernal  
Secretary – Sue Williams  
Treasurer – Trent Elwing

Board at Large: Laure Jansen  
Linda Sartnurak  
Gudrun Utz  
Rick Schultz  
Ed Scullywest

## Urban Scion Post

### Inside this issue:

President's Letter	2
Bare Root Month	3
Crabapples as Pollenizers	4-5
Virtual Spring Grafting Event	6-7
Book Review	8-9
Other Scionwood Sources	9
History of Maggot Barrier Sales	10-12
Maggot Barrier Order Form	13
Fruitful Kitchen Recipe	14
Calendar of Events	15
STFS Mission and Contacts	16
STFS Membership Form	17

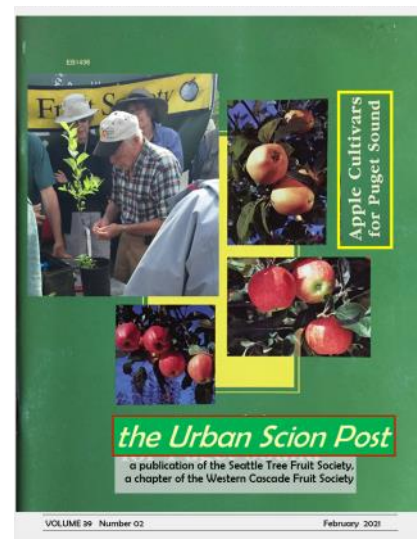
On the same day, we had our first orchard work party at the Magnuson Demonstration Orchard. Thanks to all who participated. As I have mentioned in the past, we are still looking for members to serve on the Orchard Committee and help guide our future endeavors there.

Our next scheduled membership meeting will take place on Saturday, February 20, at 10:00. It will also be a zoom gathering. We will have a brief business meeting, followed by a zoom presentation. The topic of the presentation will be decided in the next few days. Everyone will be emailed an announcement, along with the zoom link details as soon as the final plans are in place. Details of the virtual spring grafting event in March and April are included in this newsletter.

Last month, in my message to our membership, I wished a happy 95<sup>th</sup> birthday to Dr. Bob Norton. Dr Norton passed away a few days ago, and we lost a "giant" of the Pacific Northwest fruit-growing community. Dr. Norton was involved for over 50 years in one aspect or another of fruit culture in the area. As the former director of the WSU research station in Mount Vernon, Dr. Norton started the fruit research division. After retiring, he was a tireless promoter of proper fruit culture, volunteering to participate in all matter of fruit-related events, all around the area. At the Winter Field Days held each March in Mt. Vernon, he would not only be the star of the panel discussions, but he could be found grabbing a pair of loppers and hopping up into a tree to demonstrate pruning techniques, even when he was over 90 years old. He was the type of person that gave you a warm feeling when he spoke to you. He was sincere, and I'm sure that anyone who had a conversation with him learned something valuable. One of my fondest memories of him was at his 90<sup>th</sup> birthday party. I have a friend who is a professional baker, and I convinced her to make me a cake to provide for the event. She and I decorated the cake with a figure of an apple tree (made of brown marzipan). I spent a great deal of time creating little marzipan apples of different varieties to place on this tree. I thoroughly enjoyed this project, and Dr. Norton was so very appreciative of our efforts. I could detect a gleam in his eye. He was one of a kind and will be truly missed by all.

Regards, Mike Ewanciw

Editor's Note: View <https://extension.wsu.edu/maritimefruit/dr-bob-norton-2/> for reprint of The Vashon-Maury Beachcomber 2007 Nov 21 article on Dr. Norton & <http://extension.wsu.edu/maritimefruit/> for Dr. Norton's decades' work at WSU Mt. Vernon Research Center.



On the cover

Photo of Bob Norton 2016 Jul 30  
Cover of EB 1436 Apple Cultivars  
for Puget Sound (out of print?)

## February 2021, the Bare Root Month by Marilyn Tilbury

**This is a La Niña winter;** it should be wetter and colder here than average, tho so far temperatures have been moderate. It *has* been cold and precipitating snow in Madrid with 18" of the white stuff causing thousands of folks to need rescuing from snowbound vehicles. It's the most snow they've seen in 50 years. Statistically, the coldest temperatures here in WWA should be behind us, and early daffodils and snowdrops are announcing spring is on the way.

**The very best time to obtain** any bare root plants from nurseries is this month. Everything from fruit trees to strawberries is now available from good nurseries, and the earlier you move, the better the selection. One nursery the writer hasn't previously mentioned which actually encourages in-person browsing now is Restoring Eden fruit tree nursery off Old Military Road in the SeaTac area. Their website lists many tempting plants as do the previously mentioned Burnt Ridge, Cloud Mountain, One World and Raintree nurseries.

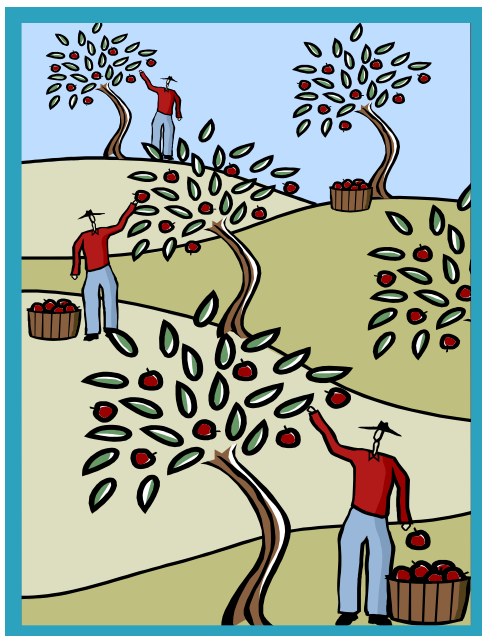
**What about the bare root fruit trees** now gracing the Costco aisles? Those trees look to be well grown and are very well priced. Are any for you? While they are produced by a quality nursery, it is located in the continental climate of Central Washington. The cultivars are selected for that climate rather than for our much different maritime climate. Rootstocks used may grow a larger tree than you might wish. Bottom line: there well might be a tree or two there for you but keep in mind their possible limitations.

**If you do get some bare root plants,** remember the old adage about digging a \$50 hole for a \$5 plant. You want to dig just deep enough to match the depth it was grown in the nursery but make the hole twice as wide so that new roots can easily spread out. Make a little soil pyramid to set the new tree on and spread the roots down over it. Soil amendments are not needed but settle

the planting site with a bucket or two of water.

**Is the new plant a dwarf fruit tree or a vine?** Install a sturdy stake or trellis (and a label!) now. Lay a straight stick across the hole and sit the new tree at least a fist width above the soil level so that the graft will not become buried with time. Otherwise the dwarfing feature of the rootstock will become lost as the scion gradually roots and grows to its full size.

**Take advantage of any dry days** to finish winter pruning of pome fruit trees and grapes and kiwi vines. Blueberries and currants should be pruned and thinned now too. If you wish to graft this spring take scionwood of stone fruits as soon as possible since they tend to break dormancy before pome fruit. Wait till May to prune stone fruit trees.



**Dry spells also offer** the opportunity to again apply a fungicide for peach leaf curl and copper or sulfur sprays against brown rot in stone fruit and cherry leaf spot in cherries. Wet springs tend to exacerbate these diseases.

**Apple anthracnose** is an insidious disease which will kill branches and even trees if not treated. This month and into March is when to treat it. The basic idea is to treat any lesions now while you can easily see them by torching with a plumber's torch, cutting out or by coating the area with petroleum jelly. STFS member Grey Giuliani pioneered the last method and it seems to work very well.

**Be alert to the possible presence** of this disease and treat any spots at least annually. Sometimes old heritage trees in the area act as an infection source. A 30 foot apple tree can't be treated, so try to site any new trees upwind of this tree or consider taking scionwood from it and grafting up a new tree on dwarfing rootstock, then removing the oldster.

**Now is a great time** to get power equipment serviced quickly, trellises repaired, faded or missing labels replaced. Are you tired of dealing with apple maggots and/or codling moths? Perhaps think about the ultimate solution of bee netting. Trees over 8 feet become a chore to install netting over so plan ahead by pruning or installing trellis support.

# The Crabapple as Pollenizer by Laure Jansen

All varieties of apple trees require some cross-pollination for fruit set. Although some varieties are listed as *self-fruitful*, they will set a heavier crop if they are *cross-pollinated*. Flowering crabapples have become popular pollen suppliers (pollenizers), because they generally have longer bloom times than apples and can be more easily cared for. Regular fruit-bearing crabapples can also be used as pollenizers (pollinizers, pollenisers, pollinisers) and will provide a secondary benefit of delicious fruit to harvest.

Because crabapples bear on one-year wood, they can be pruned each year after flowering and still produce an abundance of flowers for next season. Being slightly smaller than most other varieties, crabapple trees do not need a full tree space and so can be planted at higher pollination densities as single trees within the row in standard orchards, or several cultivars can be planted in backyard orchards.

## CHOOSING A POLLENIZER CULTIVAR

A number of factors need consideration when choosing a crabapple pollenizer for your orchard. You must determine the number of pollenizer trees you will need for the total number of main crop trees and where you will place/space them in the orchard. You must select pollenizer cultivars that have compatible pollen and compatible flowering times with your main crop cultivars. When choosing a crabapple pollenizer, be aware of honeybee preference for blossom type, especially blossom color.

Many crabapples also have quite a long flowering period because they bear on both first and second-year wood. The second-year spur blossoms open first, followed by the first-year wood flowers. Spur flowers when they set fruit tend to produce larger fruits of more evenly good quality, whereas first-year blossoms that open in later season often produce fruit that is small and sometimes misformed from poor pollination.

## BEE BEHAVIOR

Although a crabapple flowers at the correct time and the pollen is shown to be compatible from hand pollination tests, this does not necessarily mean that it is the best choice. Honeybees, when out foraging apple blossoms, tend to stay with the same color flower and fly past a different color, especially if the blossom colors are very different, such as deep red or white with a tinge of pink. Mason bees and bumble bees do not seem to exhibit this floral consistency and will pollinate different blossom colors and even different species of blossoming plants. Many cultivars of crabapples bloom early in the season and may provide pollen for early-season mason bees to pollinate early-blooming main apple cultivars.

## MANAGEMENT OF CRABAPPLE POLLENIZER TREES

The crabapple pollenizer trees can be planted on the same rootstock as the main variety and will generally result in a smaller tree. This allows for planting an earlier pollenizer variety and a later pollenizer variety to cover a long bloom season of main crop apples. After flowering, prune the crabs and remove most one-year wood. Some spurs should be retained so as to provide enough blossoms from the first opened king flowers to the later blossoming lateral flowers of the pollinated variety. When pruning, encourage a pillar shape so that there is little crowding of either the crab or neighboring trees.

## SUITABLE CRABAPPLE VARIETIES

These are some of the best varieties of crabapple pollenizer in terms of timing of flowering, from a wide range of commonly available species.

### White flower types with a touch of pink

White flowers with varying amounts of pink are treated as the same color by honeybees. The following three are the most suitable because of flower color and honeybee activity.

**"Crimson Gold"**: blooms mid-season to late; large white flowers; small to medium size red fruit covered with dusky bloom.

**"Golden Hornet"**: medium white with deep pink bud; upright tree habit; mostly suitable for Fuji, Gala, Jonagold and Delicious.

**"John Downie"**: medium white with a touch of pink in the bud, tallish spreading tree habit.

**"Manchurian Crab"**: fairly large white flowers with pale pink buds; prolific flowering on one-year wood; upright tree habit; suitable for Braeburn, Granny Smith, Delicious, but it may be too early for Fuji and Gala; linked to certain postharvest rots.

**"Mt. Blanc"(x6114cv)**: blooms mid to late-season; resistant to scab and fire-blight;

**"Mt. Evereste"(permute cv)**: blooms early to mid-season; white blossoms with small, long-hanging red fruit; scab resistant; natural dwarf tree.

**"Snodrift"**: blooms mid-season to late; single white flowers with small, orange-red fruit in autumn; low vigor, growing 15-20 feet; resistant to scab, cedar apple rust, and mildew, but susceptible to fire-blight.

### Pink flower types

Pink flowers are more intermediate for crossing with white. Some bees will bypass the color but others will also cross from color to color.

**M. × magdeburgensis**: large pink semi-double flower with same color in the bud; spreading tree habit; good timing for Delicious but late for Braeburn.

**M. hillierii**: smallish pale pink flower; very prolific flowering, spreading and weeping tree habit; good timing for Delicious but late for Braeburn.

**"Whitney Crabapple"**: blooms early, ripens late July or early August; pink and white blossoms with golf ball size crabapples which are a favorite for canning, sweet, juicy and mildly sub-acid; narrow, upright tree that is precocious and heavy bearing.

**"Wickson Crabapple"**: blooms early to mid-season; profuse white blossoms with small, late-ripening, high-sugar fruit.

### Red or winey red flower types

Different colors are less likely to be cross-pollinated, as honeybees tend to forage flowers of a similar color. Red-blossomed crabapples make good pollinators for red-fleshed apples with red blossoms.

**M. × aldenhamensis**: medium winey red with a deep red bud; spreading tree habit; later flowering that will probably miss Delicious king flowers, but could be suitable for Gala, Fuji and Jonagold.

**"Indian Summer"**: blooms with king blooms of reds; rose-red flowers, bright-red, long-hanging fruit; excellent disease resistance; moderately vigorous to 18 feet.

**"Profusion"**: medium to large bright red with deep red buds; spreading tree habit; wide spread of flowering from very early to mid-late, and could be more useful for early flowering varieties such as Braeburn, Granny Smith or Jonathan.

### SOURCES

"WSU Tree Fruit - Pollination - Apple". <http://treefruit.wsu.edu/web-article/apple-pollination/>

"Pollen preferences among the bee species visiting apple (*Malus pumila*) in New York". Russo, L., Danforth, B. *Apidologie* 48, 806-820 (2017). <https://doi.org/10.1007/s13592-017-0525-3>

"CRAB APPLES AS POLLINATORS", New South Wales Department of Agriculture, Series: Agnote 4-77, First Edition, updated: Jan 2007. Authors: Delia Dray, Jill Campbell  
<https://www.dpi.nsw.gov.au/agriculture/horticulture/pomes/apples/crabapple-pollinators>

# 2021 STFS Virtual Grafting Event

## Ordering & delivery logistics

Continuing COVID-19 spread precautions, STFS 2021 spring grafting event is virtual.

All orders need to be emailed to [seattletreefruitsociety@gmail.com](mailto:seattletreefruitsociety@gmail.com) with the subject line reading "Grafting event order".

Orders will be filled first-come-first-served according to time email order is received. Quantities are limited and might sell out early.

Payment for orders will be made by cash or check or money order made out to "STFS" and either mailed to: STFS c/o Trent Elwing, 1035 Alaska Ave E, Port Orchard, WA 98366 or handed over during in-person pickup.

Orders will be picked up by purchaser at STFS demonstration orchard in NE Seattle Magnuson Park during Sat. March 13<sup>th</sup> 10:00 AM to noon or Sat. April 10<sup>th</sup> 10:00 AM to noon.

Order deadlines: For orders to be picked up on March 13<sup>th</sup>, orders must be emailed by no later than March 6<sup>th</sup>; For orders to be picked up on April 10<sup>th</sup>, orders must be emailed by no later than April 3<sup>rd</sup>. Order now to get what you want when you want it.

Rootstock prices shown below are for STFS members only. For simplicity, rootstock prices for all purchasers other than STFS members is \$5.00 per rootstock.

Scionwood is \$1.00 per stick for STFS members; Scionwood is \$2.00 per stick for all purchasers other than STFS members. Available scionwood varieties are listed on next page. Lori Brakken gathered and preserved scionwood sticks from nearly 50 apple varieties. Thanks, Lori. Additional scionwood was provided by WWFRF. Thank you, WWFRF volunteers. Other scionwood varieties may be available and can be requested via email.

Grafted trees are available for \$10.00 per grafted tree, and this price applies for STFS members and nonmembers. To minimize confusion, an order for a grafted tree should pair the rootstock with scionwood. For example, an Ashmead's Kernel scionwood grafted to B9 rootstock could be ordered as "Ashmead's Kernel/B9". Laure Jansen will graft trees. Thanks, Laure.

Grafting of scionwood provided by STFS member or nonmember onto rootstock is available for \$10.00 per grafted tree. To do so, order desired rootstock now to ensure availability then provide your scionwood to Laure at Magnuson Park on March 13<sup>th</sup> for pick up of grafted tree on April 10<sup>th</sup> at Magnuson Park.

STFS membership has its advantages; If you are ordering a lot of rootstock & scionwood, join STFS to get STFS member pricing. Membership form on last page.

## Rootstock

Price per rootstock piece		
<b>APPLE</b>	M111	\$3.50
	B118	\$3.50
	B9	\$3.50
	M26	\$3.50
<b>PEAR</b>	Quince Provence	\$3.25
	OHxF333	\$5.00
<b>PLUM/ APRICOT</b>	Marianna 2624	\$3.50
	Krymsk1	\$5.00
	Myroblan	\$3.50

# Scionwood

## APPLE from Lori Brakken Antonovka - Buckner seedling Yellow

Arkansas Sweet  
**Baumann Renette (Reinette Baumann)**  
 Bill's Redflesh (Scarlet Surprise)  
 Braeburn Hillwell  
 Burgundy  
**Calville Blanc d'Hiver (YELLOW CALVILLE)**  
 Canadian Strawberry  
 Celestia  
 Crimson Topaz  
 Early Fuji (Auvil Early Fuji)  
**Early McIntosh, Tom's Best (Rob Roy)**  
 Early Strawberry  
 Elstar  
 Erwin Baur  
 Fall Harvey  
 Fayette  
 Granny Smith  
 Green Newtown Pippin  
 Grenadine  
**Hawkeye Greening (Not Hawkeye Delicious)**  
 Hubbardston Nonesuch  
 Karmijn de Sonnaville  
 Koidrehett/Koidu Renett  
 Mandan  
 Meyer's Red Royal Limbertwig  
 Miss Jessamine  
 Muscadet de Bernay  
 Peasgood Nonesuch  
 Pendragon  
 Pink Pearmain - Etter  
 Pink Princess  
 Pink Sparkle - Etter  
 Pitmaston Pineapple  
 Priscilla  
 Red Hook (Redhook)  
 Reinette d'Anjou (Anjou)  
 Reinette de Cuzy  
 Reinette du Carivaia  
 Reinette Jaeghers  
 Reinette Tres Tardive  
 Stayman Winesap  
 Stoke Red  
 Sudeten Reinette  
 Summer Rambo  
 Surprise Reinette  
 Vixen Crabapple  
 Winter Jon  
 Zlatna Resistenta - Yum!

## APPLE from WWFRF

Alkmene  
 Ananas Reinette  
 Arkansas Black  
 Ashmead's Kernel  
 Cravenstein, Schwartz  
 Egremont Russet  
 Enterprise  
 Esophus Spitzenberg  
 Golden Russet  
 Gravenstein, Black  
 Gravenstein, Bloodred  
 Gravenstein, Candystripe  
 Gravenstein, Rosebrook  
 Gravenstein, Starr  
 Honeycrisp  
 Jonagold, Decoster  
 Karmijn de Sonnaville  
 Liberty  
 Melrose  
 Niedzwetskyana  
 Rubinette  
 Wealthy  
 Williams' Pride

## PEAR from WWFRF

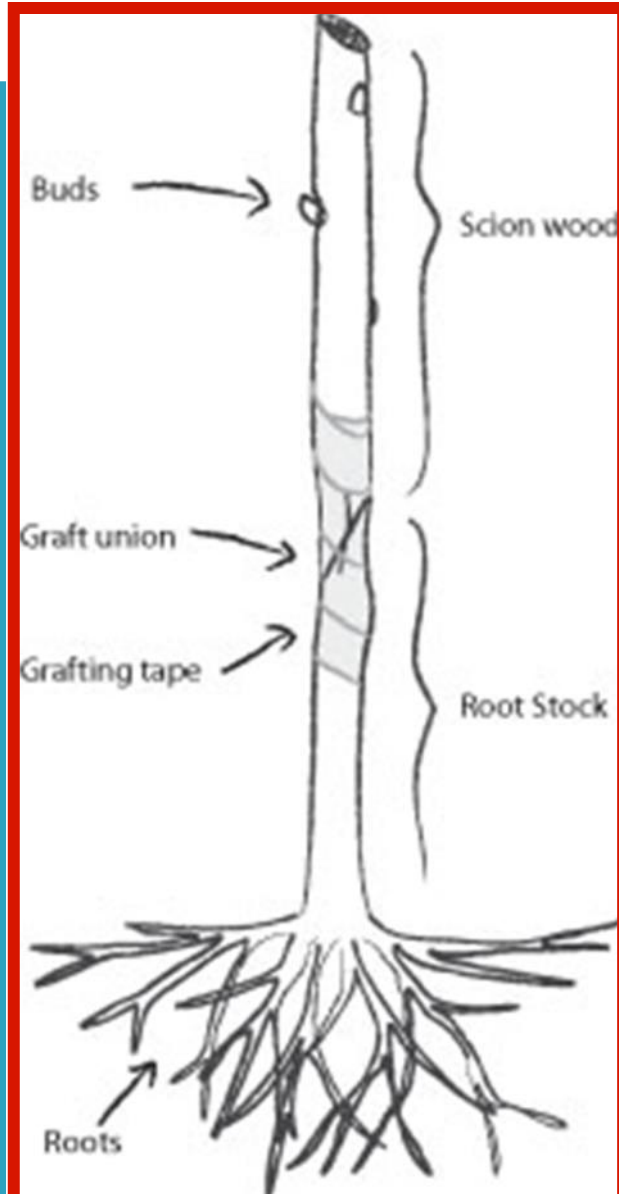
Atlantic Queen  
 Conference  
 Onward  
 Orcas  
 Rescue  
 Russet Comice  
 Starkrimson

## QUINCE from WWFRF

Aromatnaya

## MEDLAR from WWFRF

Breda Giant



## Homegrown rootstock resource

See April 2020 USP review of [Manual of Worldwide Temperate Zone Fruit and Nut Tree Rootstocks](#) published by & available from STFS member Lowell Cordas (phone 360.456.7367 or email [slcordas@yahoo.com](mailto:slcordas@yahoo.com)).

### Entry example:

B.118 (aka Bud 118) Origin: Michurinsk State Agrarian University, Russia Height: 75% to 95% B.118 is more vigorous than other rootstocks in the "B" series. It propagates easily in stool bed. Because of the vigor of the rootstock, it is only recommended for spur strains of apple of apple or in sandy soils. Produces a tree slightly larger than M.111 EMLA with a precocity that exceeds M.106 EMLA. Yield efficiency is similar to M.111. B.111 offers advantages such as excellent bud stands, resistance to cold and wet soil conditions, somewhat early bearing with moderate productivity. Good anchorage. Fire blight: susceptible; Crown Rot: resistant but needs further testing; Crown gall: slightly susceptible; Powdery mildew: slightly susceptible; Woolly apple aphid: susceptible; Apple scab: resistant; Root suckers: none; Precocity: moderate; Support: no; Cold hardy: hardy, has survived -28°F; Replant disease: resistant

Ed Scullywest, STFS's newest Board of Directors member (thanks, Ed), is planting his family's 2021 garden according to:

## *Growing a Feast* by Kurt Timmermeister

The book, *Growing a Feast*, begins with the birth of a Jersey cow named Alice, two years before an autumn feast for friends on Vashon Island. Part of the reason for the book is to explain where your food comes from and the processes it took to get there. Most of the feast is produced on Kurtwood farm, a place the author has been at for over 25 years.

The feasts use to be weekly, but now the driver for the farm is cheese production from his Jersey cows.

He ponders the homesteader who planted a standard Jonathan apple tree about seventy years before he owned the place and wondered whether they ever got to taste the fruit because a standard tree, i.e. full size, may take 10-15 years to reach full potential.

The rhythm of the seasons is quite familiar to growers in the Northwest, the dark, wet winter to the warm and sunny days of the growing season.

The idea of a feast from only what you produce is interesting. Few of us can own a Jersey cow(s), but probably a lot of STFS members grow chickens, catch fish, clams and seafood. Along with the bounty of tree fruit in September/October and at the end of the gardening system most of us could produce a decent meal with nothing from the grocery store.

**He chooses to grow nine varieties of squash.** They are as follows;

1. Black beauty, a basic zucchini
2. Tromboncino, a type of Italian summer squash that grows up to three feet long.
3. Magda a cousa type of Lebanese zucchini.
4. Costato Romanesco, grown for its edible blossoms.
5. Brode Galeux d'Eysines, a winter squash that looks like it has peanut shells on the outside.
6. Rouge Vif d'Etampe "Rouge vif" means "vivid red." Also known as Cinderella pumpkin.
7. Long Island cheese, Mentioned as early as 1806, named for its resemblance to a wheel of **cheese**. Flattened, ribbed, buff-colored **pumpkins**.
8. Delicata, a sweet acorn squash.
9. A classic acorn, unnamed variety.

**He also found some cantaloupes and melons that grow on Vashon.** They were;

10. Cantaloupe, French Charentais
11. Melon, Spanish White Sugar

(cont. P 9)

# *Growing a Feast* by Kurt Timmermeister

(cont. from P 8)

I was able to locate most of the varieties in the seed catalogs that pop up in January. I ordered four varieties and will report later on how they grew.

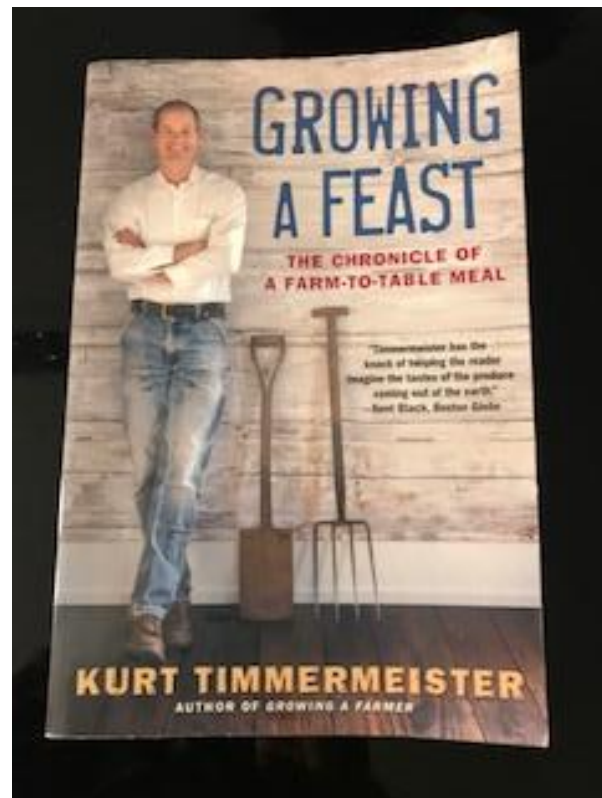
The cantaloupe was listed as a French Charentais, but in the catalogs there are a number of cantaloupes under this heading, it seems to be a region in France, not a specific type. The cantaloupe has a thin skin and soft flesh, so it is not commercially viable to ship it.

I also couldn't locate anything called a Spanish White Sugar melon. I ended up with a Piel De Sapo, which is a Spanish melon, also called a Santa Claus, or Christmas melon.

My thinking was that if people are willing to pay money for a gourmet feast that featured these vegetables, I could grow them and find out what they taste like for the cost of the seeds. Of course it took quite a bit of research and will take a growing season of sun and rain to try them out.

The book is available through the King County Library system and probably a few copies at any used bookstore on Vashon Island.

*~Ed Scullywest*



## Other Sources for Scionwood

More isn't necessarily better and may cause FOMO brain seize (tangent: [www.saturdayeveningpost.com](http://www.saturdayeveningpost.com) Search "Jurgen Jetsohn" or "More is not better" Contrariwise column), but here are links to other scionwood resources:

<https://extension.wsu.edu/maritimefruit/tree-fruit/scionwood-sources/>  
<https://www.summerlandvarieties.com/budwood/catalogue/>  
<http://bighorsecreekfarm.com/apple-scionwood/>  
<http://maplevalleyorchards.com/scionwood/>  
<https://www.fedcoseeds.com/trees/scionwood>  
<https://gnarlypippins.com/shop/>  
<https://thefruithouse.weebly.com/apple-scions-copy-2.html?fbclid=IwAR0cTwiL6R5KA7b4rfxJUptvoMo0ktpLOW1zRDWw-B4Kleb3DcmKoebkqs>

### Scionwood for spring 2022?

The Temperate Orchard Conservancy (TOC) website includes the TOC list ([www.temperateorchardconservancy.org/wp-content/uploads/TOC-Apple-List-12-2020.pdf](http://www.temperateorchardconservancy.org/wp-content/uploads/TOC-Apple-List-12-2020.pdf)) of probably over 1,700 apple varieties from which scionwood may be harvested and available upon request. Unfortunately, at least for spring 2021, orders for 2021 were only accepted from December 1st, 2020 through January 31st, 2021. For now, check TOC website for whether spring 2021 grafted tree orders are being taken. Then in fall, 2021, check back for instructions on ordering scionwood for spring 2022.

# Evolution of Maggot Barriers



**Regular** **Super** **New Extreme**

**Regular aka Original** Kept out apple maggot flies from laying eggs under fruit's skin  
Offered little to no protection against codling moth larvae from boring into fruit's flesh to core  
**Extinct: No longer available as of January 2021**

**Super (heavier thread)** Kept out apple maggot flies ... Offered some protection against codling  
moth larvae **Extinct: No longer available as of January 2021**

**New Extreme (heaviest thread with squared-off stitched end)** New and untested, but ...  
Presumed complete protection against apple maggot flies when applied after fruit thinning  
Presumed better protection from codling moth larvae when secured around fruit's stem  
Presumed washable and re-useable  
**Available as of January 2021**

# History of MB Sales by STFS

**In 2006**, following research by then STFS President David Conners, STFS began selling disposable nylon footies originally designed for and worn by customers trying on shoes in shops. The footies were renamed “Maggot Barriers” and sold to apple growers suffering fruit damage caused by apple maggots. Maggot Barriers (MBs) don’t actively kill apple maggot but instead are placed over individual developing fruit set after thinning in late spring/early summer. The MB prevents apple maggot flies from laying eggs under the covered fruit’s skin. This barrier method using regular nylon footies is effective against apple maggot but has been observed to offer little protection against codling moth.

Without MBs or other effective controls, apple maggot larvae emerge from eggs laid under the fruit’s skin then chew throughout the flesh of developing apple fruit. In the end, the fruit’s flesh is contaminated with discolored tracks left by excreting larvae. Typically, the quality of the entire apple fruit is compromised with little or no salvageable parts of the infected apple fruit.

**Back in 2006**, a bag of 300 Regular MBs bought by STFS from the Massachusetts-based supplier cost \$6.00 plus \$0.70 shipping. STFS sold Regular MBs in-person to STFS members for \$15.00 per bag and to members of the public for \$20.00 per bag.



**Apple Maggot Flies**

Photo: Jack Kelly Clark, UC Statewide IPM Program

**More on apple maggot and other pests of Pacific NW:**

<https://pnwhandbooks.org/>

Also WSU Extension Bulletin EB1928

Regular MBs offer little protection against codling moths (CM). Fruit damage by CM larvae is visually quite different from the mess caused by apple maggot larvae; Adult CM lay eggs on fruit set and leaves, CM larvae emerge from eggs and move to fruit set then chew directly to the apple’s core and consume developing seeds. Damage in many fruit is isolated to the entry hole and apple’s core that becomes a void filled with dark brown fecal matter. For the hungry and dexterous, these contaminated areas can be removed with a paring knife and the remaining apple fruit’s flesh consumed.

**In 2009**, the MB manufacturer added the heavier Super MBs presumably to offer more protection against codling moth. A bag of 150 Super MBs bought by STFS from the supplier cost \$4.25 plus \$0.75 shipping. STFS sold Super MBs to STFS members for \$10.00 per bag & to members of the public for \$15.00 per bag.

# History of MB Sales by STFS

## Changes to MB costs, prices and availability over the years:

**2009:** cost of 1 bag of 300 Regular MBs to STFS was increased by the manufacturer to \$6.50 plus \$0.75 shipping.

**2009:** STFS started selling bags of Regular and Super MBs by mail; shipping was \$5.00 for the 1st 1 or the 1st 2 bags of MBs with \$5.00 added for each additional bag of the order.

**2010:** STFS began selling Regular and Super MBs to local nurseries. STFS charged nurseries wholesale price of \$10.50 plus shipping cost per bag from the manufacturer for each bag of Regular MBs and \$7.00 plus the shipping cost per bag from the manufacturer for each bag of Super MBs.

**2014:** MB manufacturer reduced number of Regular MBs from 300 to 288 per bag and Super MBs from 150 to 144 per bag.

**2019:** MB manufacturer repackaged MBs from bags into boxes printed with text and illustrations marketed to MB users.

**2019:** MB manufacturer increased cost of Regular MBs to \$7.00 per box and Super MBs to \$4.75 per box. STFS increased wholesale price for nurseries to \$11.00 plus shipping for 1 box of Reg. MBs & \$7.25 plus shipping for 1 box of Super MBs.

## See new MB order form in this newsletter.

At the beginning of 2021, the MB manufacturer informed STFS member Linda Sartnurak that the Regular and Super MBs had been discontinued following direct negative feedback from customers. A new MB, wider, thicker, and presumably more durable than the Super MB, is now available. Each box of new Extreme MBs will contain 100 MBs will cost STFS \$4.95 per box plus approximately \$1.05 shipping.

Based on past pricing practices, for 2021, STFS is selling the Extreme MBs as follows:

To STFS members in-person: \$12.00 per box of 100 Extreme MBs.

To members of the public in-person: \$18.00 per box of 100 Extreme MBs.

For mail orders: Same Extreme MBs prices for STFS members and members of the public as previously mentioned. For shipping costs: \$8.00 to ship either the 1st box or 1st 2 boxes and then an additional \$8.00 to ship each additional box after the 1st two boxes.

For wholesale to nurseries: \$7.50 to \$8.00 per box of 100 Extreme MBs plus shipping per box of 100 Extreme MBs.



**More on “bee” (also apple maggot, codling moth, bird, fawn, ...) barrier netting available to STFS members in upcoming USP newsletter**

# Protect your Fruit with *Apple Maggot Barriers*

Seattle Tree Fruit Society (STFS), a Chapter of the Western Cascade Fruit Society, offers Maggot Barriers (MBs) as part of our educational mission promoting interest in growing fruit bearing trees, shrubs & vines in urban areas & disseminating pertinent horticultural information to the public.

Past versions of MBs have proven effective against apple maggot damage to fruit.

New Extreme MBs with heaviest thread count & squared-off stitched ends are expected to continue preventing apple maggot damage & also greatly reduce codling moth damage in home orchards of the Puget Sound area when used according to package instructions.

To order Extreme MBs, complete this form. **Become a STFS member & save \$6/pk.**  
Visit [www.seattletreefruitsociety.com](http://www.seattletreefruitsociety.com) for membership & other information.

## APPLE MAGGOT BARRIER ORDER FORM

<b>Name:</b>	<b>Phone:</b>	Date Rec'd _____
<b>Address:</b>		Date Mailed _____
<b>City, State, ZIP:</b>		Processed by _____
<b>Email address:</b>		

<b>100 Extreme MBs per package</b>	<b>Enter quantity of packages ordered: Qty</b> _____
<b>Are you a STFS member?</b>	<b>YES</b> _____ <b>or</b> <b>NO</b> _____
<b>YES:</b> \$12.00 per package of 100 MBs for STFS members	<b>Qty X \$12</b> \$ _____
<b>NO:</b> \$18.00 per package of 100 MBs for Nonmembers	<b>Qty X \$18</b> \$ _____
Shipping & Handling for first 1 or 2 pkgs	\$ 8.00
Add \$8 S&H for each additional package after first 2 pkgs.	\$ _____
<b>US FUNDS ONLY</b> <b>Please make checks payable to "STFS"</b>	<b>TOTAL</b> \$ _____

Please US mail completed order form with payment to:  
STFS c/o Linda Sartnurak, 17504 – 155<sup>th</sup> Ave SE, Renton WA 98058-9064

Please complete the Shipping Label below:

**From:** Maggot Barriers – STFS  
c/o Linda Sartnurak  
17504 – 155<sup>th</sup> Ave SE  
Renton WA 98058-9064

**To:**

**Name:**

**Address:**

**City, State, ZIP:**

Ver. 2021-02-09

## Citrus-Dressed Artichoke, Spelt Berry & Chickpea Salad

Contributed by Tracey Bernal

It's still a great time to choose from an amazing selection of citrus. This dressing recipe is so versatile- you'll have a bit left over for other uses. It is adapted from one of my favorite cookbooks of all time, **\*\*\*Simply Ancient Grains\*\*\***.

I have made this recipe so many times, and a bonus is that the Trader Joe's artichokes come in jars that are perfect for reuse- for spices, tea, and leftovers.

### \*\*\*Salad\*\*\*

- 2 cups cooked spelt berries or farro
- 1 cup cooked chickpeas
- 2/3 cup citrus dressing, recipe below
- 14 ounce jar marinated artichoke hearts, drained
- ½ orange, peeled and cut into ½ inch chunks (1 cup)
- 1/3 cup salt cured olives or Kalamata olives, pitted
- Salt and pepper
- ½ cup crumbled feta**
- ¼ cup loosely packed chopped fresh herbs such as parsley, dill or cilantro**

Combine all the ingredients except the feta and herbs, let sit for at least 10 minutes, **then sprinkle with the feta and herbs.**

### \*\*\*Whole Citrus Dressing\*\*\*

- 1 large whole lemon or ½ orange, cut into a few chunks & seeds removed (do not peel)
- ½ shallot cut into chunks
- 2 tablespoons white balsamic or white wine vinegar
- 2 to 3 teaspoons honey
- ½ teaspoon Aleppo pepper or ¼ teaspoon dried red chile flakes
- ½ teaspoon sea salt
- ¼ cup olive oil

Place all ingredients in a blender & process for 30 seconds or until mostly smooth.

# Calendar of fruit related events

**Online: USDA's forum Building Resilience in Agricultural & Food Systems through Innovative & Strategic Partnerships via Microsoft Teams Live Event – Wednesday 17 February 2021 10:00 AM – 3:30 PM PST** Held in conjunction with USDA's Ag Outlook Forum focusing on food systems and disaster recovery: USDA, Ag industry and community organization leaders present on government/private partnerships building resilience in agricultural and food systems followed by open Q&A discussion. Register online at: <https://gcc02.safelinks.protection.outlook.com/?url=https%3A%2F%2Fforms.office.com%2FPages%2FResponsePage.aspx%3Fid%3D5zZb7e4BvE6GfuA8-g1Glx9T9qtOOKpAp5kEHkHEO81UQU8wOTITOTAzVkvWTEo0TTM3MjBIM-zVSMi4u&data=04%7C01%7C%7Caafd58a0f3da4177d62d08d8c187e764%7Ced5b36e701ee4ebc867ee03cfa0d4697%7C0%7C0%7C637472136728338902%7CUnknown%7CTWFpbGZsb3d8eyJWIjoiMC4wLjAwMDAiLCJQIjoiV2luMzIiLCJBTiI6Iik1haWwiLCJXVCI6Mn0%3D%7C1000&sdata=m%2FBuXLVBFpK8uCL6I5I9DvE39qvVI4aW6W8qxWhyLm4%3D&reserved=0> If you have any questions, please contact OPPE's Alex Cordova at [alex.cordova@usda.gov](mailto:alex.cordova@usda.gov) or FPAC's Jessica Carlton at [jessica.carlton@usda.gov](mailto:jessica.carlton@usda.gov).

**Online: STFS member meeting via Zoom – Saturday 20 February 2021 10:00 AM – noon** See more details in President's Letter of this USP newsletter. Zoom invitation will be emailed to STFS members during week of Monday 15 February - Friday 19 February.

**In-person: Winter Pruning Class by Ingela Wanerstrand - Saturday 20 February 2021 11:00 AM to 1:00 PM** - \$15 per participant Freeway Estates Community Orchard NE Seattle - Rain or shine! Distancing and masks required, Limited to four outside participants. Ingela has 30 years of commercial pruning experience & teaches in the Edmonds Community College Horticulture Program, microphone will be used. More info: [freewayestatescommunityorchard@gmail.com](mailto:freewayestatescommunityorchard@gmail.com) & [www.freewayestates.org](http://www.freewayestates.org)

**Online: International Fruit Tree Association (IFTA) winter meeting – Monday 22 February 2021 – Wednesday 24 February 2021** - \$200 registration & register at [www.ifruittree.org](http://www.ifruittree.org) with additional details on presentations covering farm financials, economics of planting decisions, trellis/support structures for all tree fruits resistant to windstorm induced failure, regional honeycrisp orchards, tree physiology management influence on fruit quality, high-density pear systems, emerging technologies.

**In-person: Winter pruning at historic Piper's Orchard – Saturday 27 February 2021** – NW Seattle Carkeek Park – Email Paul Brookshire ([pkbrookshire@me.com](mailto:pkbrookshire@me.com)) for more details including time.

**Online: Tilth Alliance organic pest management for fruit trees by Barb Burrill via Zoom – Tuesday 2 March 2021 6:00 PM – 7:00 PM** ???Register at

**In-person: STFS grafting event pickup – Saturday 13 March 2021 10:00 AM – noon** – NE Seattle Magnuson Park demonstration orchard - pick up of orders emailed no later than Saturday 6 March 2021. See more details on pages 6&7 of this USP newsletter.

**In-person: STFS grafting event pickup – Saturday 10 April 2021 10:00 AM – noon** – NE Seattle Magnuson Park demonstration orchard – pick up of orders emailed no later than Saturday 3 April 2021. See more details on pages 6&7 of this USP newsletter.

**WWFRF events???**

## **STFS: Who Are We & What We Do**

**Western Cascade Fruit Society (WCFS)**, a 501(c)(3) non-profit organization, was founded in 1980 & is made up of nine Western Washington chapters, including STFS, full of helpful hobby orchardists & backyard fruit growers.

STFS members receive automatic membership in WCFS. WCFS publishes a quarterly BeeLine electronic newsletter to inform members of events, tours, articles & reports. WCFS provides other member services, including an online member forum, an online chapter-wide event calendar & an online home for chapter sites. See [www.wcfs.org](http://www.wcfs.org).

**Seattle Tree Fruit Society (STFS)** is a chapter of WCFS. The purposes of STFS are listed in Article II of STFS By-laws amended & restated as of 18 January 2014:

### **STFS will bring together people ...**

- 1) to promote & stimulate interest in growing fruit bearing trees, shrubs & vines in urban areas,
- 2) to encourage propagation of desirable fruit varieties suited to the local climate,
- 3) to disseminate pertinent horticultural information to its members & the general public through the use of fruit shows, orchard tours, meetings, seminars, workshops, publications & other media,
- 4) to provide financial & other support to our area's fruit research and/or projects, &
- 5) to join with other organizations in promoting tree fruit in the Western Cascade region.

STFS members share an interest in growing fruit & nut trees, berries, kiwis, grapes & other fruit. We offer information on adapted varieties, current growing techniques & share our own experiences growing fruit.

STFS members meet monthly from Sept to May usually in-person on a Saturday morning in Seattle's Magnuson Park. In-person meetings typically include speakers presenting on topics such as grafting, pruning, pest control, plant health & fruit preservation tailored to Western Washington growers. STFS members receive both the STFS online monthly newsletter Urban Scion Post (USP) & the WCFS online quarterly BeeLine. STFS is online at [www.seattletreefruitsociety.com](http://www.seattletreefruitsociety.com) and [www.facebook.com/SeattleTreeFruitSociety/](http://www.facebook.com/SeattleTreeFruitSociety/)

**The STFS membership is Seattle Tree Fruit Society.** The goals of STFS are achieved by STFS members. Please contact STFS representatives listed in this newsletter and communicate what STFS can do for you and what you can do for STFS. When more STFS members get involved, STFS does more & attracts more STFS members who get involved.

## **Seattle Tree Fruit Society**

[seattletreefruitsociety@gmail.com](mailto:seattletreefruitsociety@gmail.com)

[www.seattletreefruitsociety.com](http://www.seattletreefruitsociety.com)

[www.facebook.com/SeattleTreeFruitSociety/](http://www.facebook.com/SeattleTreeFruitSociety/)

**PRESIDENT** Mike Ewanciw 206.683.9665  
(2-year term expires Jan 2023)

**VICE PRES.** Tracey Bernal 206.913.3778  
(2-year term expires Jan 2023)

**SECRETARY** Sue Williams 206.383.8033  
(2-year term expires Jan 2023)

**TREASURER** Trent Elwing 26.517.3118  
(2-year term expires Jan 2023)

---

**MEMBERSHIP** Trent Elwing 206.517.3118

**HOSPITALITY** Judy Scheinuk 206.200.1483  
[scheinukj@gmail.com](mailto:scheinukj@gmail.com)

### **STFS DIRECTORS**

**#1 - Laure Jansen**

(3-year term expires Jan 2024)

**#2 - Linda Sartnurak 425.271.6264**  
[noilinda@yahoo.com](mailto:noilinda@yahoo.com)

(3-year term expires Jan 2024)

**#3 - Ed Scullywest 425.286.4030**

(3-year term expires Jan 2024)

**#4 - Rick Shultz [rshultz@highline.edu](mailto:rshultz@highline.edu)**  
(3-year term expires Jan 2024)

**#5 - Gudrun Utz**

(3-year term expires Jan 2024)

**#6 - Vacant—please volunteer**

(3-year term expires Jan 20??)

**#7 - Vacant—please volunteer**

(3-year term expires Jan 20??)

---

### **USP NEWSLETTER EDITORS**

Trent Elwing [treling@gmail.com](mailto:treling@gmail.com)

Laure Jansen [seattleorchardist@gmail.com](mailto:seattleorchardist@gmail.com)

Tracey Bernal [tmjbernal0216@gmail.com](mailto:tmjbernal0216@gmail.com)

---

### **STANDING COMMITTEE CHAIRS**

Orchard - Vacant—please volunteer

Events - Vacant—please volunteer

Programs - Vacant—please volunteer

NEW MEMBERSHIP & RENEWAL FORM

Seattle Tree Fruit Society

[www.seattletreefruitsociety.com](http://www.seattletreefruitsociety.com)

A Chapter of the Western Cascade Fruit Society

[www.wcfs.org](http://www.wcfs.org)

Name:

Phone:

Address:

City, State, ZIP:

Email address:

DUES (includes STFS and Western Cascade Fruit Society)

New Member – Regular Rate – \$25	_____
New Member – Limited Income or Student Rate – \$15	_____
Renewing – Regular Rate – \$25	_____
Renewing – Limited Income or Student Rate – \$15	_____
Optional: Donation to support fruit research (\$5 min)	+ _____
Optional: Donation (other purpose) (\$5 min)	+ _____
<b>TOTAL</b>	_____

make checks payable to STFS., and mail with this form to:

STFS, c/o Trent Elwing,  
1035 Alaska Ave E, Port Orchard, WA 98366

*Our STFS club is run by and for our members - volunteers make things happen. If you would like to help, contact any Officer or Board member (see your newsletter) or email [seattletreefruitsociety@gmail.com](mailto:seattletreefruitsociety@gmail.com)*

**How do I know when my annual STFS membership will expire?**

Back in March 2020 before the COVID-19 pandemic took hold, printed USP newsletters were USPS-mailed, and the STFS membership renewal date was printed above the mailing address of each member’s hardcopy printed newsletter.

To minimize spread of the coronavirus causing COVID-19, USP newsletters are now electronic and emailed. A reminder to renew your STFS membership no longer is printed above the mailing address.

Depending upon when a STFS member joins, annual memberships expire at the end of March, June, September or December each year.

Trent Elwing, STFS membership coordinator, will email STFS members one month prior to an expiring STFS membership reminding of the need to renew shortly and how to renew.

**Need to know now? Contact Trent  
(phone/text: 206.517.3118 email: [trelwing@gmail.com](mailto:trelwing@gmail.com))**